

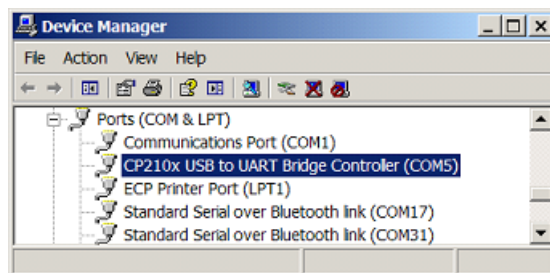
How to resolve COM port conflicts when installing an IFSYS-8004 adapter

This document provides you a step-by-step guide on how to resolve COM port conflicts when installing an IFSYS-8004 adapter.

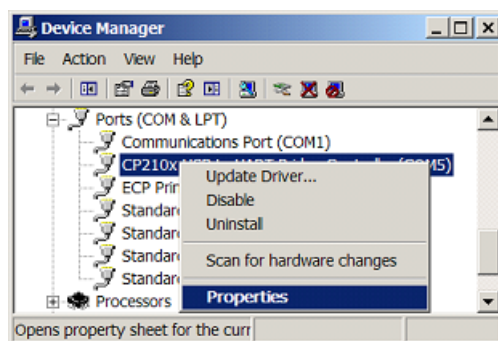
When the IFSYS-8004 driver is first installed, the driver typically locates an unused COM port from the Windows system and automatically uses that. This procedure normally works without issues. However, on rare occasions, it is possible that separate drivers will be installed to use the same resource, and a conflict of resources results. This can happen for a variety of reasons, including possibly a Windows user inadvertently specifying that a newly installed device use an already utilized COM port. In such a case the conflict can be resolved by simply specifying the freshly installed application use a different COM port. If the conflict occurs with the virtual COM port installed by the IFSYS-8004 USB-to-Serial converter, the following steps will allow the conflict to be resolved by remapping the virtual COM port used by the IFSYS-8004 driver. The procedure to do this is shown in the following sections.

Remapping the COM port used by the IFSYS-8004 driver

- Step 1 :** Right click on the “**My Computer**” icon and select Properties. The System Properties about your PC will be displayed. Click on **Hardware** tab and then the **Device Manager** button.
- Step 2 :** You should see the following screen. Scroll down to **Ports (COM & LPT)** section. Notice that **CP210x USB to UART Bridge Controller (COM5)** entry. This shows that the IFSYS-8004 COM port is mapped to **COM5** (it may differ from PC to PC).

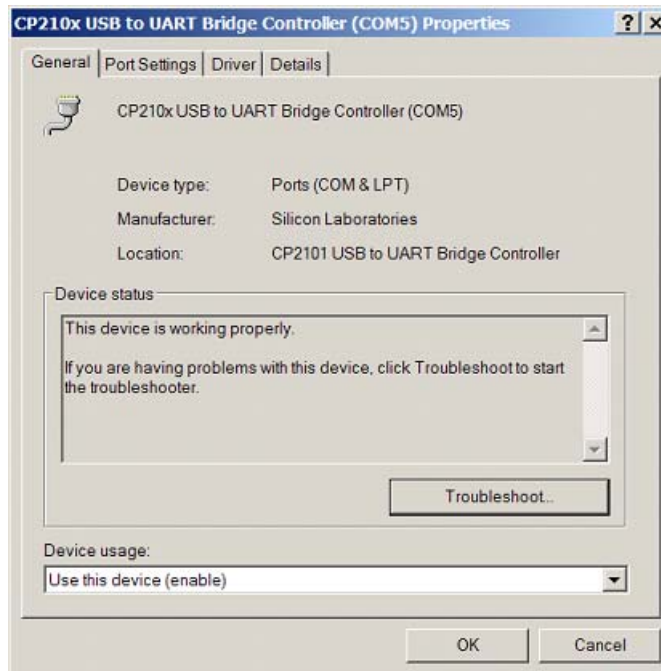


- Step 3 :** Next, right click **CP210x USB to UART Bridge Controller (COM5)** entry and select **Properties**, as shown below.

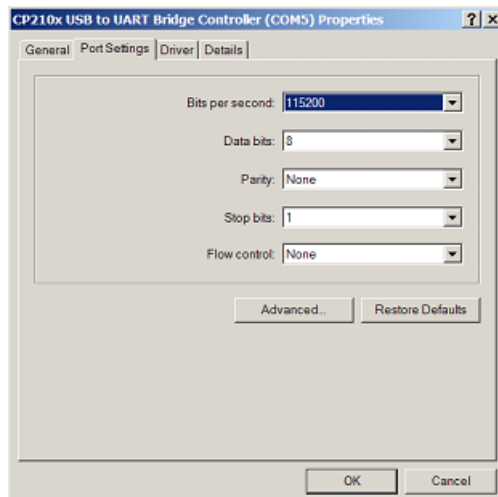


How to resolve COM port conflicts when installing an IFSYS-8004 adapter

Step 4 : You will see the following screen. Select the **Port Setting** tab.

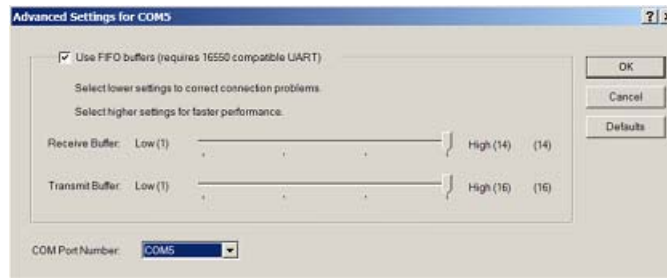


Step 5: The COM port settings page will be displayed, showing the COM port configuration. Click on the **Advanced** button.



How to resolve COM port conflicts when installing an IFSYS-8004 adapter

Step 6: You will see the following screen.



The COM port number will be the number you observed in Step 2. Click on the COMx list box and select an *unused* port (the one without “in use” next to it). Once you have done this press the **OK** button to complete the COM port remapping process.

Step 7: You can verify that your port settings have changed by closing Device Manager and by repeating steps 1) and 2). At this point the entry under the **Ports (COM & LPT)** section should read **CP210x USB to UART Bridge Controller (COMx)**, COMx being the port that you specified to remap to.

Step 8: Reboot your PC.